



8 in 1 USB-C Docking Laptop Cooling Pad



UC-A6 RGB Triangle Cooling Pad With USB-C HUB

- 1. TYPE-C Connector:**
USB 3.1 Gen1. Port allows connect the laptop devices with USB-C to UC-A6 hub.(USB-A to USB-C / USB-C to USB-C Gen1 cable)
- 2. USB3.0 HUB:**
USB 3.0 HUB x 4Port , Transmission speed 5Gbps , Downward compatible with USB2.0/1.x : Power supply 5V 900mHA
- 3. RGB button:**
RGB controller button x 1Port , 10 RGB mode.
- 4. Product Size:**
Measure : 260*230*75 ~ 135mm



UC-A8 RGB Triangle Cooling Pad With USB-C Docking Station

- 1. TYPE-C Connector:**
USB 3.1 Gen1. Port allows connect the laptop devices with USB-C to UC-A6 hub. (USB-C to USB-C Gen1 cable)
- 2. USB3.0 HUB:**
USB 3.0 HUB x 3Port , Transmission speed 5Gbps , Downward compatible with USB2.0/1.x : Power supply 5V 900mHA
- 3. USB Card Reader:**
Micro SD / SD card reader , Transmission speed 600Mbps
- 4. Gigabite Ethernet:**
Max. Ethernet Speed 1000Mbps
- 5. HDMI:**
4Kx2K@30hz(3840*2160),Downward compatible with 1080P .1080i .720P
- 6. RGB button:**
RGB controller button x 1Port , 10 RGB mode.
- 7. Product Size:**
Measure : 260*230*75 ~ 135mm

11 in 1 Ergonomic USB-C Docking Riser Stand



UC3209 Ergonomic 8 in 1 USB-C Docking with Monitor Stand Riser

- 1. TYPE-C 1 HOST:
USB 3.1 Gen1. Port allows connect the laptop devices with USB-C to UC3208 dock. (USB-C to USB-C Gen2 cable)
- 2. TYPE-C 2 PD:
USB 3.1 Gen1. Port allows connect Power Delivery 20V5A@100W
- 3. USB3,0 HUB:
USB 3.0 HUB x 3Port , Transmission speed 5Gbps , Downward compatible with USB2.0/1.x : Power supply 5V 900mHA
- 4. USB Card Reader:
Micro SD / SD card reader , Transmission speed 600Mbps
- 5. HDMI: HDMI 4Kx2K@30hz(3840*2160),Downward compatible with 1080P .1080i .720P
- 6. Aux slot: 3.5mm audio slot.
- 7. Product Size: 300*240*60mm



UC3208 Ergonomic 11 in 1 USB-C Docking with Monitor Stand Riser

- 1. TYPE-C 1 HOST:
USB 3.1 Gen1. Port allows connect the laptop devices with USB-C to UC3208 dock. (USB-C to USB-C Gen2 cable)
- 2. TYPE-C 2 PD:
USB 3.1 Gen1. Port allows connect Power Delivery 20V5A@100W
- 3. USB3,0 HUB:
USB 3.0 HUB x 3Port , Transmission speed 5Gbps , Downward compatible with USB2.0/1.x : Power supply 5V 900mHA
- 4. USB Card Reader:
Micro SD / SD card reader , Transmission speed 600Mbps
- 5. Gigabite Ethernet:
Max. Ethernet Speed 1000Mbps
- 6. HDMI & VGA:
HDMI 4Kx2K@30hz(3840*2160),Downward compatible with 1080P .1080i .720P
VGA Max.1080P@60hz , when simultaneously work , output 1080P
- 7. Aux slot: 3.5mm audio slot.
- 8. Product Size: Measure : 400*240*60mm

USB-C Docking station with Monitor Riser Stand

11 in 1 Ergonomic USB-C Docking Riser Stand



UC0201 Ergonomic 8 in 1 USB-C Docking with Monitor Stand Riser

- TYPE-C 1 HOST:**
USB 3.1 Gen1. Port allows connect the laptop devices with USB-C to UC3208 dock. (USB-C to USB-C Gen2 cable)
- TYPE-C 2 PD:**
USB 3.1 Gen1. Port allows connect Power Delivery 20V5A@100W
- USB3.0 HUB:**
USB 3.0 HUB x 3Port , Transmission speed 5Gbps , Downward compatible with USB2.0/1.x : Power supply 5V 900mHA
- USB Card Reader:**
Micro SD / SD card reader , Transmission speed 600Mbps
- Gigabite Ethernet:**
Max. Ethernet Speed 1000Mbps
- HDMI & VGA:**
HDMI 4Kx2K@30hz(3840*2160),Downward compatible with 1080P .1080I .720P
VGA Max.1080P@60hz , when simultaneously work , output 1080P
- Aux slot:** 3.5mm audio slot.
- Product Size:** 287*150*19mm

UC0202 Reversible Laptop Stand with 14 in 1 USB-C Docking



- TYPE-C 1 PD:** USB 3.1 Gen1. Port allows connect Power Delivery 20V5A@100W
- HDMI & VGA:**
HDMI 4Kx2K@30hz(3840*2160),Downward compatible with 1080P .1080I .720P
VGA Max.1080P@60hz , when simultaneously work , output 1080P
- Aux slot:** 3.5mm audio slot.
- USB C Female HUB:**
USB 3.1 Gen1 HUB x 2Port , Transmission speed 5Gbps , Downward compatible with USB2.0/1.x
- USB3.0 HUB:**
USB 3.0 HUB x 3Port , Transmission speed 5Gbps , Downward compatible with USB2.0/1.x : Power supply 5V 900mHA
- USB Card Reader:**
Micro SD / SD card reader , Transmission speed 600Mbps
- USB2.0 HUB:**
USB 3.0 HUB x 3Port , Transmission speed 5Gbps , Downward compatible with USB2.0/1.x : Power supply 5V 900mHA
- Gigabite Ethernet:**
Max. Ethernet Speed 1000Mbps
- Product Size:** 272*80.4*18mm

USB-C Dockling station with Scissor Computer Keyboard

Ergonomic Laptop Stand & Monitor Stand



P11 Ergonomic Laptop Stand

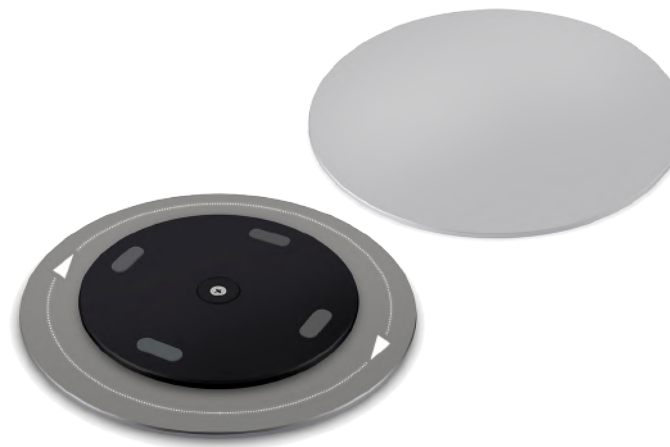
1. Material : Zinc alloy + Rubber Stick
2. Application : Laptop Foldable Stand
3. Technology : Electroplating processing

Suitable for various size of Laptop
4. Product Size: 48*35*0.62mm

R11 Rotation 360-Degree Monitor Stand

1. Material : Aluminum alloy + ABS
2. Application : iMac / iMac Pro / Monitor rotation Display Stand
3. Technology : Electroplating processing

Suitable for Monitor , Display , ALL-IN-ONE Computer
4. Product Size: 8.7*0.36 inch



Ergonomic Universal Aluminum Monitor Stand



MRS20 Ergonomic Monitor Stand W/O HUB

1. Material : Aluminum alloy + Solid Wood
2. Application : iMac / iMac Pro / Monitor rotation Display Stand
3. Technology : Electroplating processing

Suitable for Monitor , Display , ALL-IN-ONE Computer
4. Product Size: 564*240*91mm



MRS20U Ergonomic Monitor Stand with USB HUB

1. Material : Aluminum alloy + Solid Wood
2. Application : iMac / iMac Pro / Monitor rotation Display Stand
3. Technology : Electroplating processing

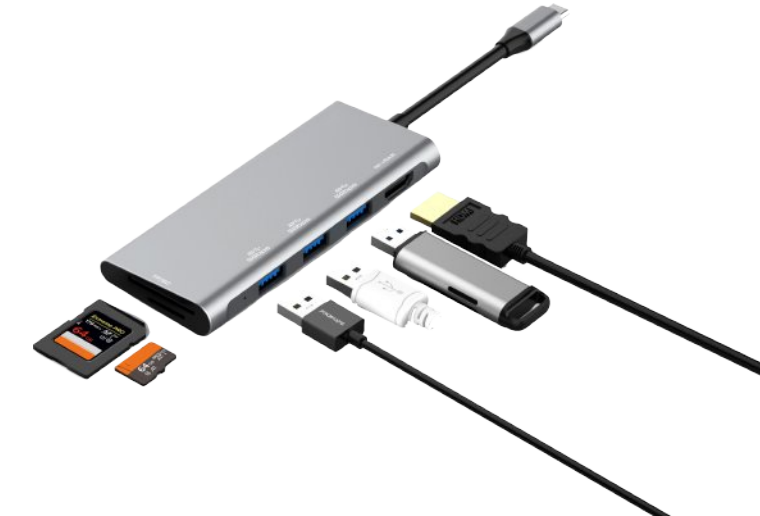
Suitable for Monitor , Display , ALL-IN-ONE Computer
4. Product Size: 564*240*91mm
5. USB3.0 HUB:
USB 3.0 HUB x 4Port , Transmission speed 5Gbps , Downward compatible with USB2.0/1.x : Power supply 5V 900mA

2021 NEW Product offerings and technologies



UC4204 6 IN 1 USB-C 4K HDMI Card Reader HUB W/O PD

- 1. TYPE-C 1 HOST:**
USB 3.1 Gen1. Port allows connect the laptop devices with USB-C
- 2. USB3.0 HUB:**
USB 3.0 HUB x 3Port , Transmission speed 5Gbps , Downward compatible with USB2.0/1.x : Power supply 5V 900mHA
- 3. USB Card Reader:**
Micro SD / SD card reader , Transmission speed 600Mbps
- 4. HDMI:** HDMI 4Kx2K@30hz(3840*2160),Downward compatible with 1080P .1080I .720P
- 5. Product Size:** 112*45*12.4mm



UC4205 6 IN 1 Dual HDMI HUB with PD

- 1. TYPE-C 1 HOST:**
USB 3.1 Gen1. Port allows connect the laptop devices with USB-C
- 2. TYPD-C 2 USB 3.1 Gen1.** Port allows connect Power Delivery 20V5A@100W
- 3. USB3.0 HUB:**
USB 3.0 HUB x 3Port , Transmission speed 5Gbps , Downward compatible with USB2.0/1.x : Power supply 5V 900mHA
- 4. HDMI:** Dual HDMI 4Kx2K@30hz(3840*2160),Downward compatible with 1080P .1080I .720P
- 5. Product Size:** 112*45*12.4mm



UC4206 6 IN 1 Multi-monitors HUB with HDMI2.0 & DP1.2

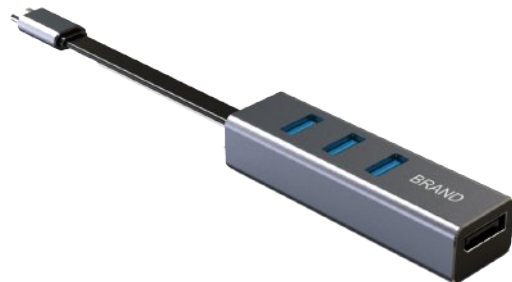
- 1. TYPE-C 1 HOST:**
USB 3.1 Gen1. Port allows connect the laptop devices with USB-C
- 2. TYPD-C 2 USB 3.1 Gen1.** Port allows connect Power Delivery 20V5A@100W
- 3. USB3.0 HUB:**
USB 3.0 HUB x 3Port , Transmission speed 5Gbps , Downward compatible with USB2.0/1.x : Power supply 5V 900mHA
- 4. HDMI:** HDMI 4Kx2K@30hz(3840*2160),Downward compatible with 1080P .1080I .720P
- 5. DisplayPort :** DisplayPort DP1.2 4Kx2K@60hz
- 6. HDMI & DP :** Simultaneously output 4K@30hz
- 7. Product Size:** 112*45*12.4mm

2021 USB-C Flat Cable HUB



UC4011 4 IN 1 USB-C HUB

1. TYPE-C 1 HOST:
USB 3.1 Gen1. Port allows connect the laptop devices with USB-C
2. USB3.0 HUB:
USB 3.0 HUB x 4Port , Transmission speed 5Gbps , Downward compatible with USB2.0/1.x : Power supply 5V 900mHA
3. Product Size: 80*23.4*16.5mm
4. Cable length : 93mm



UC4013 4 IN 1 USB-C HUB with DisplayPort

1. TYPE-C 1 HOST:
USB 3.1 Gen1. Port allows connect the laptop devices with USB-C
2. USB3.0 HUB:
USB 3.0 HUB x 4Port , Transmission speed 5Gbps , Downward compatible with USB2.0/1.x : Power supply 5V 900mHA
3. DisplayPort : DP1.2 3840x2160@60hz output
4. Product Size: 80*23.4*16.5mm
5. Cable length : 93mm



UC4012 4 IN 1 USB-C HUB with HDMI

1. TYPE-C 1 HOST:
USB 3.1 Gen1. Port allows connect the laptop devices with USB-C
2. USB3.0 HUB:
USB 3.0 HUB x 4Port , Transmission speed 5Gbps , Downward compatible with USB2.0/1.x : Power supply 5V 900mHA
3. HDMI : HDMI1.4 3840x2160@30hz output
4. Product Size: 80*23.4*16.5mm
5. Cable length : 93mm



UC4014 4 IN 1 USB-C HUB with Ethernet

1. TYPE-C 1 HOST:
USB 3.1 Gen1. Port allows connect the laptop devices with USB-C
2. USB3.0 HUB:
USB 3.0 HUB x 4Port , Transmission speed 5Gbps , Downward compatible with USB2.0/1.x : Power supply 5V 900mHA
3. Ethernet : Gigabit ethernet RJ45 Jack . 10/100/1000mbps
4. Product Size: 80*23.4*16.5mm
5. Cable length : 93mm

2021 Light-touch HUB no-need additional power adapter



Light-Touch Switch Individual on/off HUB ,Build-in Power chip



UC401U 4 IN 1 USB-A HUB 5Gbps

1. USB A HOST: USB 3.0 allows connect the laptop devices with USB-A
2. USB3.0 HUB: USB 3.0 HUB x 4Port , Transmission speed 5Gbps , Downward compatible with USB2.0/1.x : BC1.2 Protocol
3. Product Size: 97*32.5*15mm
4. Cable length : 120mm



UC401C 4 IN 1 USB-C HUB 5Gbps

1. USB C HOST: USB 3.1 Gen1 allows connect the laptop devices with USB-C
2. USB3.0 HUB: USB 3.0 HUB x 4Port , Transmission speed 5Gbps , Downward compatible with USB2.0/1.x : BC1.2 Protocol
3. Product Size: 97*32.5*15mm
4. Cable length : 120mm



UC401G2 4 IN 1 USB-C Gen2 10Gbps HUB

1. TYPE-C 1 HOST: USB 3.1 Gen2. Port allows connect the laptop devices with USB-C
2. USB3.0 HUB: USB-A Female HUB x 4Port , Transmission speed 10Gbps , Downward compatible with USB3.0/2.0/1.x
3. Product Size: 97*32.5*15mm

USB 3.1 TYPE-C Gen 2 HUB 10Gbps



UC401S USB KVM BOX 2x IN - 4x OUT

1. 2 USB Input / 4 USB Output
2. Universal Serial Bus USB3.0 data 5Gbps
3. 1 button for switch between two computers , individual Operating Blue Light
4. Power supply : USB-A to Micro USB charging cable 5V2.4A
5. Measure : 102*47*14.2mm

2021 DATA HUB



UC0601 4 IN 1 USB-C HUB 2*USB3.0 2*USB2.0

- 1. TYPE-C 1 HOST :
USB 3.1 Gen1. Port allows connect the laptop devices with USB-C
- 2. USB3.0 HUB :
USB 3.0 HUB x 2Port , Transmission speed 5Gbps , Downward compatible with USB2.0/1.x : Power supply 5V 900mHA
- 3. USB2.0 HUB :
USB 2.0 HUB x 2Port , 480Mbps
- 4. Product Size : 98*21.4*12.4mm
- 5. Cable Lenth : 200mm



UC0602 4 IN 1 USB-C HUB 4Port*USB3.0

- 1. TYPE-C 1 HOST :
USB 3.1 Gen1. Port allows connect the laptop devices with USB-C
- 2. USB3.0 HUB :
USB 3.0 HUB x 4Port , Transmission speed 5Gbps , Downward compatible with USB2.0/1.x : Power supply 5V 900mHA
- 3. Product Size : 98*21.4*12.4mm
- 4. Cable Lenth : 200mm



UC0603 4 IN 1 USB-C HUB 2USB-C 2USB-A

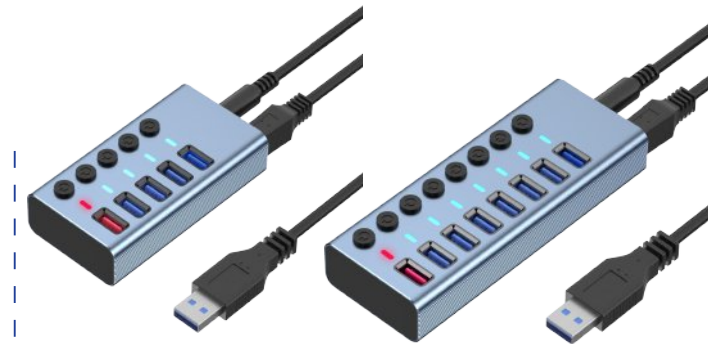
- 1. TYPE-C 1 HOST :
USB 3.1 Gen1. Port allows connect the laptop devices with USB-C
- 2. USB3.0 HUB :
USB 3.0 HUB x 2Port , Transmission speed 5Gbps , Downward compatible with USB2.0/1.x : Power supply 5V 900mHA
- 3. USB3.1 Gen1 HUB :
USB C HUB x 2Port , Transmission speed 5Gbps
- 4. Product Size : 98*21.4*12.4mm
- 5. Cable Lenth : 200mm



UC0604 5 IN 1 USB-C HUB with 3Port*USB Card Reader

- 1. TYPE-C 1 HOST :
USB 3.1 Gen1. Port allows connect the laptop devices with USB-C
- 2. USB3.0 HUB :
USB 3.0 HUB x 3Port , Transmission speed 5Gbps , Downward compatible with USB2.0/1.x : Power supply 5V 900mHA
- 3. Card Reader :
Simultaneously read and write SD / Micro SD card
- 4. Product Size : 98*21.4*12.4mm
- 5. Cable Lenth : 200mm

2021 Industrial Grade 12V HUB



UC305 5Ports USB3.0 HUB

1. TYPE-A PD: 5V2.4A @12W Quick Charging your digital devices
2. TYPE-A HUB: 4Ports USB 3.0 HUB at 5Gbps . Simultaneously working

UC308 8Ports USB3.0 HUB

1. TYPE-A PD: 5V2.4A @12W Quick Charging your digital devices
2. TYPE-A HUB: 7Ports USB 3.0 HUB at 5Gbps . Simultaneously working



UC311 11Ports USB3.0 HUB wall mount

11Ports USB Extender USB3,0 hub simultaneously charging and OTG data transmission compliant 10-port industrial USB 3.0 hub and 1Port fast charger gives you the scalability you need in harsh industrial environments, product and repair labs, conference rooms or office workstations. With its rugged industrial grade metal housing, it is designed to meet the advanced requirements of connecting a high number of devices in factories and office environments.

- | | |
|---------------------------------------|--|
| 1Port USB TYPE-A fast charging : | at 2.4A5V@12W |
| 10Port USB TYPE-A 3.0 HUB : | at 5Gbps data each port |
| excessive voltage protection : | Support |
| instantaneous current protection : | Support |
| Plug and Play : | Support Hot-swapping |
| Power Source : | 12V4A AC adapter , EU , US , UK , AU power cable |
| 100 to 240 VAC, 50 / 60 Hz at 1.5 A : | AC input power |
| 12 VDC at 2 A 3A 6A Optional : | DC input power |

1. TYPE-A PD: 5V2.4A @12W Quick Charging your digital devices
2. TYPE-A HUB: 10Ports USB 3.0 HUB at 5Gbps . Simultaneously working

USB-C HUB

WITH NGFF SATA III / NVME PCI-E M.2 ENCLOSURE



MODEL NO : UC0306



MODEL NO : UC0307

USB-C HUB

WITH NGFF SATA III / NVME PCI-E M.2 ENCLOSURE

NGFF / NVME M.2 Enclosure with USB-C HUB



UC0304 5 IN 1 USB-C HUB with NGFF M.2 Enclosure

1. TYPE-C 1 HOST:
USB 3.1 Gen1. Port allows connect the laptop devices with USB-C
2. TYPE-C 2 PD:
USB 3.1 Gen1. Port allows connect Power Delivery 20V5A@100W
3. USB3.0 HUB:
USB 3.0 HUB x 2Port , Transmission speed 5Gbps , Downward compatible with USB2.0/1.x : Power supply 5V 900mA
4. HDMI : HDMI1.4 3840x2160@30hz output
5. Ethernet : Gigabit rj45 adapter , Max.1000Mbps
6. M.2 SDD Enclosure : SDD B-KEY M.2 SATA 3Gen 6G speed.
7. Product Size : 123*50,5*14mm



UC0305 13 IN 1 USB-C HUB with NVME M.2 Enclosure

1. TYPE-C 1 HOST:
USB 3.1 Gen1. Port allows connect the laptop devices with USB-C
2. TYPE-C 2 PD:
USB 3.1 Gen1. Port allows connect Power Delivery 20V5A@100W
3. USB3.0 HUB:
USB 3.0 HUB x 2Port , Transmission speed 5Gbps , Downward compatible with USB2.0/1.x : Power supply 5V 900mA
4. HDMI : HDMI1.4 3840x2160@30hz output
5. Ethernet : Gigabit rj45 adapter , Max.1000Mbps
6. M.2 SDD Enclosure : SDD B-KEY M.2 SATA 3Gen 6G speed.
7. Product Size : 123*50,5*14mm



2020 Tailight USB-C HUB

USB TYPE-C MultiPorts HUB HDTV DATA AUDIO

Promotional Advertising

Special Offer :

UC4203 8 IN 1 HDMI +3USB3.0 HUB+ SD TF card reader +3.5mm audio slot + TYPE-C PD

UC4202 6 IN 1 HDMI + 3USB3.0 HUB + 3.5mm audio slot + TYPE-C PD

UC4201 6 IN 1 HDMI +3USB3.0 HUB+ SD TF card reader

Compatible list :

Macbook air / Pro , ipad pro
 Microsoft Surface pro 7 ,
 HP , DELL , ASUS , LENOVO
 Google . Razer . Acer , Samsung
 XiaoMi , Huawei

Smart Phone
 HuaWei . XiaoMi . Samsung

Operating System
 Mac , Windows . Android

US\$ 12.6

UC4203

US\$ 11.6

UC4202

US\$ 9.99

UC4201

NFGG / NVME M.2 Enclosure with USB-C HUB



UC4201 6 IN 1 USB-C HUB W/O PD

1. TYPE-C 1 HOST:
USB 3.1 Gen1. Port allows connect the laptop devices with USB-C
2. Card Reader :
Simultaneously Read and Write SD / TF card
3. HDMI :
HDMI1.4 3840x2160@30hz video resolution
4. USB3.0 HUB:
USB 3.0 HUB x 3Port , Transmission speed 5Gbps , Downward compatible with USB2.0/1.x
5. Product Size : 112*37*13mm

UC4202 6 IN 1 USB-C HUB with PD

1. TYPE-C 1 HOST:
USB 3.1 Gen1. Port allows connect the laptop devices with USB-C
2. TYPE-C PD:
20V3A Max. PD2.0
3. 3,5 aux :
Audio 3.5mm slot , allows plug the earphone
4. HDMI :
HDMI1.4 3840x2160@30hz video resolution
5. USB3.0 HUB:
USB 3.0 HUB x 3Port , Transmission speed 5Gbps , Downward compatible with USB2.0/1.x
6. Product Size : 112*37*13mm

UC4203 8 IN 1 USB-C HUB with PD

1. TYPE-C 1 HOST:
USB 3.1 Gen1. Port allows connect the laptop devices with USB-C
2. TYPE-C PD:
20V3A Max. PD2.0
3. 3,5 aux :
Audio 3.5mm slot , allows plug the earphone
4. HDMI :
HDMI1.4 3840x2160@30hz video resolution
5. USB3.0 HUB:
USB 3.0 HUB x 3Port , Transmission speed 5Gbps , Downward compatible with USB2.0/1.x
6. Card Reader :
Simultaneously Read and Write SD / TF card
7. Product Size : 112*37*13mm

MSLFORCE USB-C Audio Video Data Apater



UC0107



UC0109



UC0108



UC4201



UC0111



UC0114



UC0112



UC0116



UC4201



UC4201



UC4201



UC4201

One-Time Plastic Injection Moulding , Most Durable

DisplayPort cable

- Model : DP-DVI002C / DisplayPort Male to DVI Male cable
- Goldplated DisplayPort Connector, one-time molding Process
- DVI (24+5) Output
- It allows you to connect the laptop with Displayport to display with DVI
- Model : DP-HD001C / DisplayPort Male to HDMI Male Cable
- Maximum supports HDMI 4K*2K@60Hz output
- Goldplated DisplayPort Connector, one-time molding Process
- Compatible with Windows OS and Mac OS
- Model : DP-VGA003C / DisplayPort Male to VGA Male cable
- Support VGA 1080P Output
- Goldplated DisplayPort Connector, one-time molding Process
- Compatible with Windows OS and Mac OS



DisplayPort Adapter

- Model : DP-HD001A / DisplayPort to HDMI adapter
- Model : DP-DVI002A / DisplayPort to DVI adapter
- Model : DP-VGA003A / DisplayPort to VGA adapter
- Goldplated DisplayPort Connector, Aluminum Housing with fabric cable
- HDMI/DisplayPort Output, Max Video Resolution up to 3840*2160@60Hz, 3840*2160@30Hz
- Compatible with Windows OS and Mac OS



Mini DisplayPort Adapter

- Model : MDP-HD001A / Mini DisplayPort to HDMI adapter
- Model : MDP-DVI002A / Mini DisplayPort to DVI adapter
- Model : MDP-VGA003A / Mini DisplayPort to VGA adapter
- Goldplated Mini DisplayPort Connector, Aluminum Housing with fabric cable
- HDMI Output, Max Video Resolution up to 3840*2160@60Hz, 3840*2160@30Hz, Allows Mirror Mode or Extend Mode
- DVI Max Video Resolution up to 3840*2160@30Hz, VGA supports 1080P Resolution
- Compatible with Windows OS and Mac OS



Active adapter



HDMI to DisplayPort Converter

- HDMI to DP Adapter with USB Power-4K
- Connects your HDMI-enabled Ultrabook or laptop to a DP monitor using this compact, USB-powered adapter
- Works with HDMI enabled computers with 4K such as the HP ChromeBook 14 and DisplayPort enabled monitors and projectors
- Supports Resolutions up to 4K*2k@60Hz
- No software or drivers required
- Display HDMI content on a DisplayPort monitor; let you deliver high-resolution content to your DP-enabled display, achieving astonishing quality of Ultra HD

MHD-DPU001

HDU2DP Active HDMI to DisplayPort Female with USB Power



DP2VGA Active DisplayPort to VGA adapter



MDP2VGA Active Mini DisplayPort to VGA adapter

2021 DisplayLink Certified docking

USB TYPE-C female HUB for meeting room
Pocket style__Multimedia Conference System



UC1410M



MODEL NO :: UC-1410M



UC1410M-Pro

USB TYPE-C female HUB for meeting room
UC1410M_Pro version Multimedia Conference System



MODEL NO :: UC-1410M_Pro

ODM Service conference Room Docking solution